

# 3D CONTOUR MAPS

SEND  
E-MAIL

WHAT IS  
NEW

DOWNLOAD

3D VIEW

INTERFACE

SLICES

BITMAP TO  
3D MAP

MANUAL

LIBRARIES

LINKS

CPU  
HISTORY

РУССКАЯ  
СТРАНИЦА

**3DField** is a contouring surface plotting and 3D data program that runs under Microsoft Windows NT/XP/Vista/7. 3DField converts your data into contour maps and surface plots. All aspects of 2D or 3D maps can be customized to produce exactly the presentation you want. The software component [SWLib](#) and others are available.

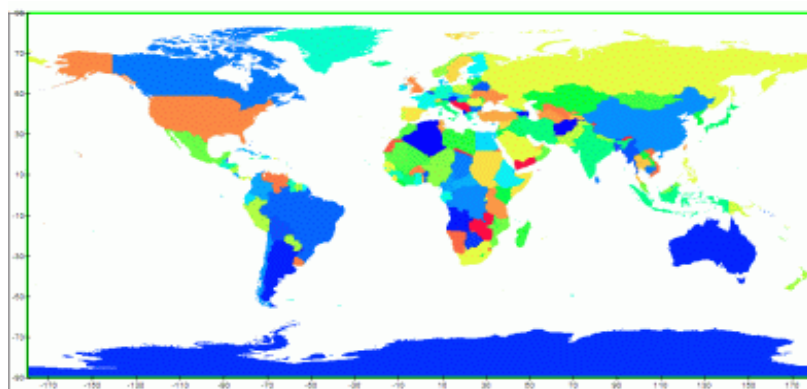
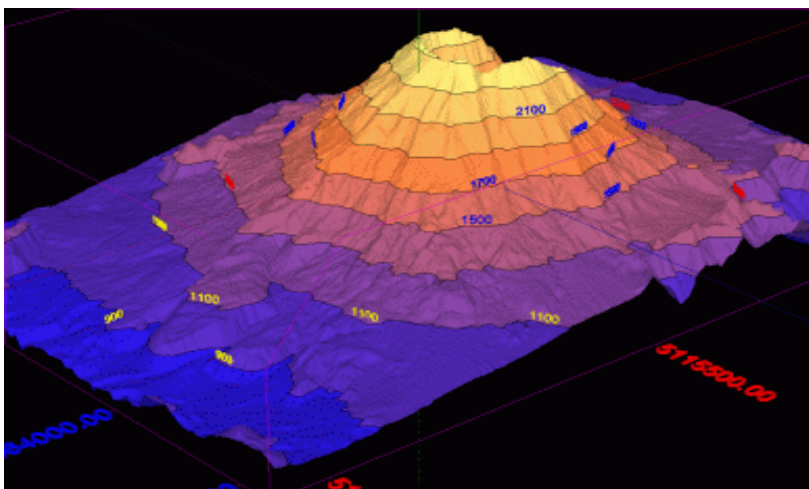
Also 4D software project

**3DFieldPro** new version:

- Volume gridding for 4D scattered points by 4 gridding methods;
- Create isosurfaces and 3D planes;
- 3D model with irregular grid;
- All options of 3DField.

- **Choose the FILE | OPEN command to load:**

- scattered (X,Y,Z) data points (up to a few million for registered version) ;
- scattered (X,Y,Z, links) data points with links;
- \*.SHP files (ArcView ESRI Shapefiles);
- GPS NMEA files (elevations or depths);
- ASCII \*.DEM USGS Digital Elevation Model files;
- ASCII \*.DXF Autocad files (points and lines entities);
- ASCII \*.GEN ArcInfo files (polygons);
- \*.CSV files from SonarViewer (Lowrance Electronics, Inc);
- \*.SLG Lowrance Sonar Log Data files using SLG2TXT utility from Lowrance Customer Service;
- \*.GRD Surfer 6, Surfer7 and Surfer8 files;
- \*.ASC ArcInfo compatible ASCII grid format;
- 1" and 3" SRTM data in HGT format (with .HGT extension);
- \*.CPS ASCII CPS-3 grid;

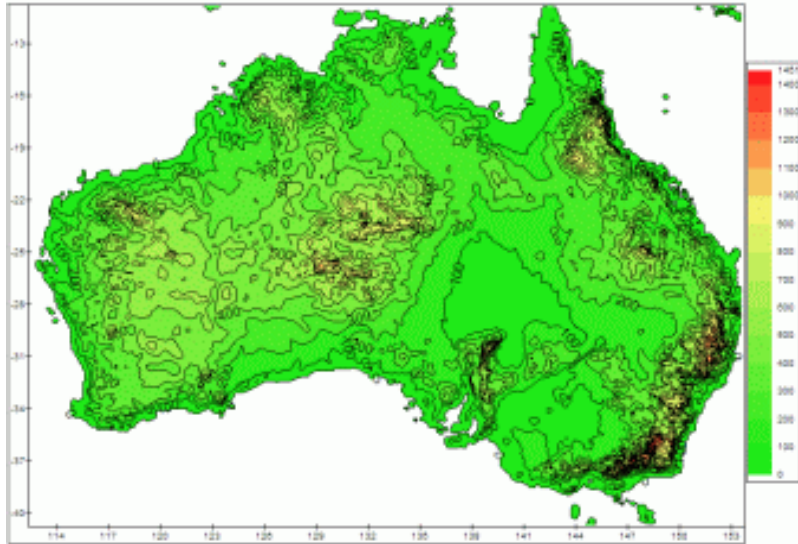


- \*.DBF DBase files;
- BMP, JPG, PNG, GIF, TIFF, GeoTIFF pictures;
- \*.3DF 3DField documents;
- \*.PNG files with the *3DField* data inside logo.

- **Choose the FILE | OPEN 2D/3D DATA command to load 2D/3D matrix data { $Z_{ijk}$ }**
- **Choose the FILE | IMPORT GPS DATA command to load data (waypoints, tracks, routes and links) from GPS files:**

Cetus for Palm/OS;  
CoPilot Flight Planner for Palm/OS;  
DeLorme GPL;  
DeLorme (drawing) file;  
DeLorme Street Atlas Route;  
EasyGPS binary format;  
Garmin Mapsource:  
Garmin PCX5;  
GeocachingDB for Palm/OS;  
GeoGrid-Viewer;  
GeoNiche .pdb;  
GpilotS;  
GPSPilot Tracker for Palm/OS;  
Holux (gm-100) Format;  
KuDaTa PsiTrex text;  
Lowrance USR;

Magellan NAV  
Companion for  
Palm/OS;  
Magellan serial  
protocol;  
Magellan SD  
files (as for  
Meridian);  
Magellan SD  
files (as for  
eXplorist);  
Motorrad  
Routenplaner  
(Map & Guide);  
MS  
PocketStreets  
2002 Pushpin;  
National  
Geographic  
Topo;  
NMEA 0183  
sentences;  
Quovadis;  
OziExplorer;  
PathAway  
Database for  
Palm/OS;  
TomTom POI  
file;  
TopoMapPro  
Places File;  
Vito Navigator  
II tracks;  
U.S. Census  
Bureau Tiger  
Mapping  
Service;



- **Result maps:**
  - black and white contour map;
  - color fill contour map;
  - color cells map;
  - color points map;
  - Dirichlet color tessellations map;
  - Delauney triangles map;
  - [color](#) and [monotone](#) relief map;
  - circle values map;
  - color polygons map;
  - [pie map](#);

- slope map;
- various data visualization charts;
- [3D view relief contour maps:](#)
- [graph maps:](#)
- [rotated images:](#)
- OpenGL 3D map with contours and textures.

- **Export:**

- 3D mesh (surface) in Autocad DXF format;
- contours with labels in Autocad DXF format;
- contours as 3D polylines in Autocad DXF format;
- contours as 3D polylines in ArcView ESRI Shapefiles SHP format;
- data points in Autocad DXF format;
- points, contours and drawing lines as waypoints, routes and tracks to GPS files;
- \*.GRD Surfer 6 files;
- 2D mesh of triangles in text format;
- 2D/3D mesh of triangles in Autocad DXF format.

3DField

Autocad

[Export to  
Autocad](#)

- **Save as:**

- \*.3DF (3DField digital data document);
- \*.PNG (digital data and picture of your data in same file).

- **[8 gridding methods:](#)**

- RBF (Radial Basis Functions);
- Inverse Distances;
- Triangulation;
- Kriging;
- Minimum Curvature;
- Natural Neighbors;
- Linear System;
- MBA (Multilevel B-Spline Approximation).

- **Automatic or user-defined contour intervals and ranges**

- **Control over contour label format, font, frequency and spacing**

- **Automatic or user-defined color for contour lines**

- **Color and texture fill between contours, either user-specified or as an automatic spectrum of your choice**

- **[Base map attached to data points](#)**

- **Data analysis, histogram for scattered points and interpolated grid values**

- **Regression 2D data**

- **Convex hull for points**

- **Rotated and transparent 2D image**

- **Splines for lines and contours**

- **View and zoom BMP, GIF, PNG, JPG, TIFF and GeoTIFF images**

- **Automatically and manually digitize image**

- **Import and export lines**

- **Ascending or descending sort for values or coordinates of points**

- **OpenGL view with full screen rotation.**

- **Textures**

- **[Convert a contour bitmap to a 3D view](#)**

- **Output maps as EMF, WMF, BMP, JPG, PNG, GeoTIFF file formats**

- **Insert maps (EMF or bitmap) in any document Microsoft Office**

- Multipage scale print
- Multilingual interface

[Frequently-Asked Question with Answers](#)

[Problems and Solutions](#)

Also gridding and contouring [libraries](#) are available.  
[SWLib](#) is new 3D contour library.  
Contact [author](#) for details.

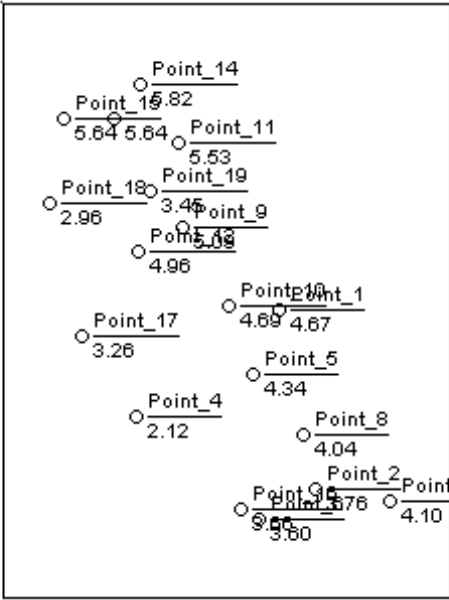
Download [3DField v 3.2.7 \(3.2 MB\)](#)



If you have data:

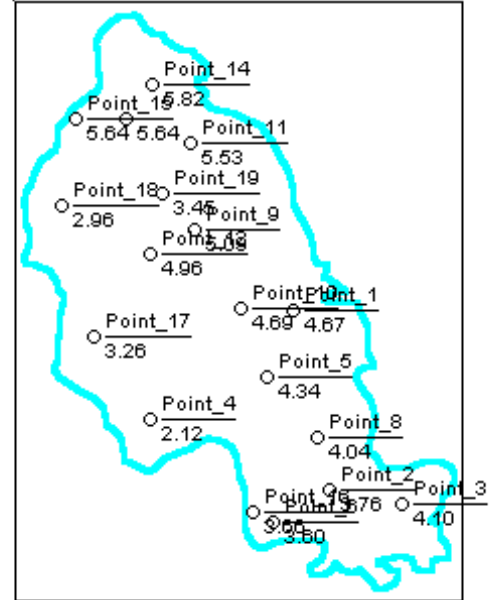
X	Y	Value or Z (option)	Name (option)
26070	46750	4.6750	Point_1
27890	37640	3.7640	
...	...	...	
24080	36560	3.6560	"Point 23"

Load the data set by Open command

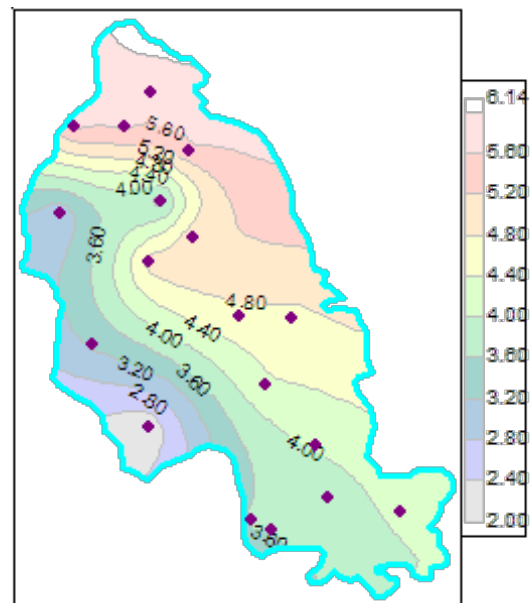




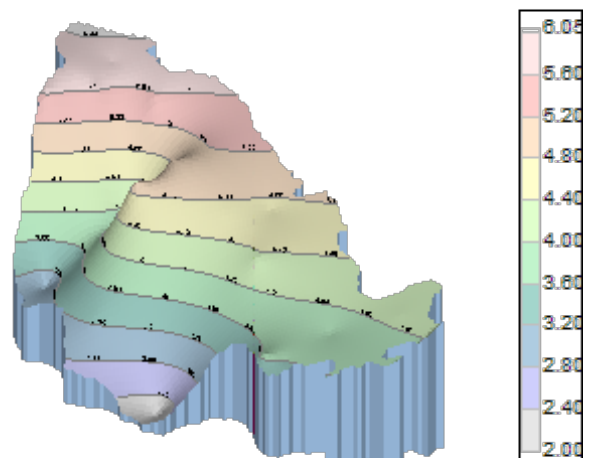
Draw the boundary or load it ( if it is necessary)



You can format the contour map and import it as EMF, WMF, BMP, PNG, JPG, GIF file (it is possible through Clipboard) in any document Microsoft Office.

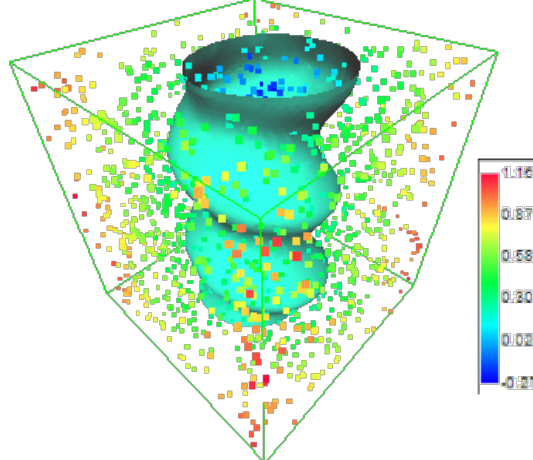


Click the OpenGL View button



For 4D scattered points

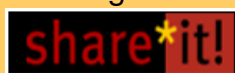
[3DFieldPro](#) new version



Download [3DField v 3.2.7 \(3.2 MB\)](#) new

You can register your copy of 3DField at a cost of \$99 or Euro 79.

This program can be registered through ShareIt



in Euro.

This program can be registered through

**RegSoft.com**



in \$.

These above forms will also give users options to purchase via Voice, Fax, or Postal Mail.

Upgrade free



**Vladimir Galouchko author 3DField**

If you have comments or suggestions, feel free to send me a message at

**SEND  
E-MAIL**

